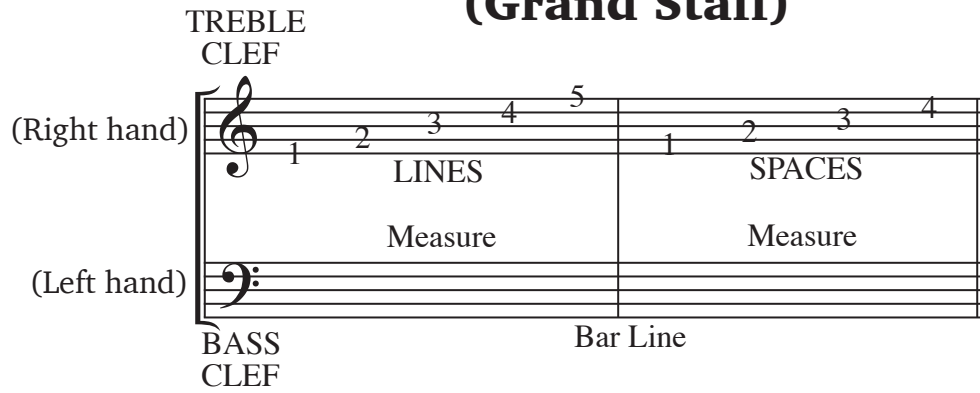
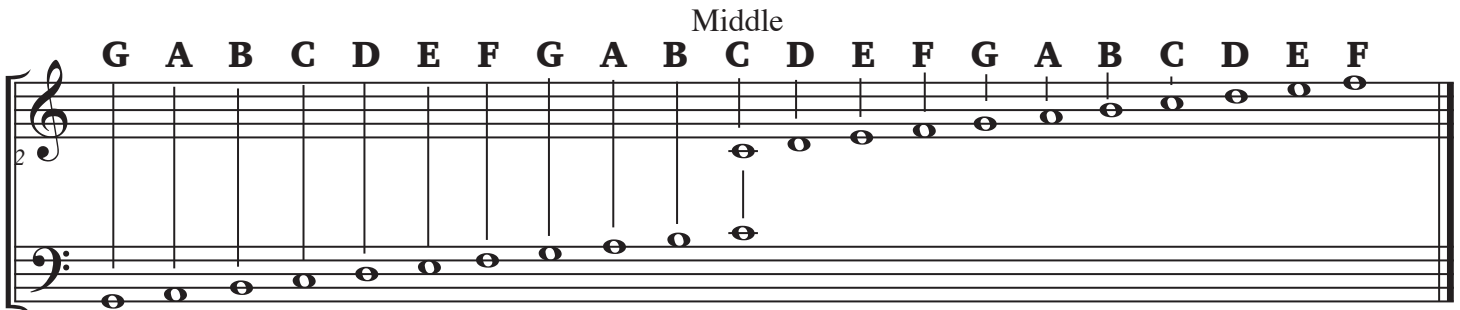


Music Index

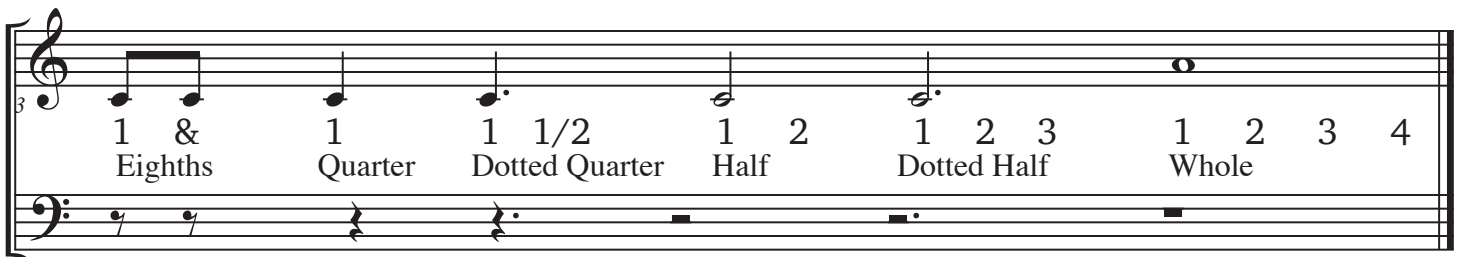
(Grand Staff)



(Note Names)



(Note Values)



(Rest Values)

Music Index

(Terms)

<i>Piano</i>	<i>P</i> means soft
<i>Forte</i>	<i>F</i> means loud
<i>Legato</i>	play smoothly / under or over a slur
<i>Staccato</i>	play disconnected / a dot above or below note
<i>Slur</i>	A curved line over or under 2 or more different notes
<i>Ritard</i>	Gradually slow down
<i>Tie</i>	A curved line connecting 2 or more of the same note, play the 1st note and hold the other(s)
<i>D.C.</i>	Go back to beginning
<i>D.S.</i>	Go back to sign
<i>Fine</i>	End at Fine
§	Sign

(Intervals)

The image shows a grand staff (treble and bass clefs) in 4/4 time. It illustrates five intervals between two notes: Unison (two notes on the same line), 2nds (two notes on adjacent lines), 3rds (two notes on lines and spaces), 4ths (two notes on spaces), and 5ths (two notes on spaces and lines).

(Time Signatures)

(Simple Time)

2	2 beats per Bar
4	Quarter note gets 1 beat
3	3 beats per Bar
4	Quarter note gets 1 beat
4	4 beats per Bar
4	Quarter note gets 1 beat

(Compound Time)

6	2 beats per Bar
8	Dotted Quarter note gets 1 beat
9	3 beats per Bar
8	Dotted Quarter note gets 1 beat
12	4 beats per Bar
8	Dotted Quarter note gets 1 beat